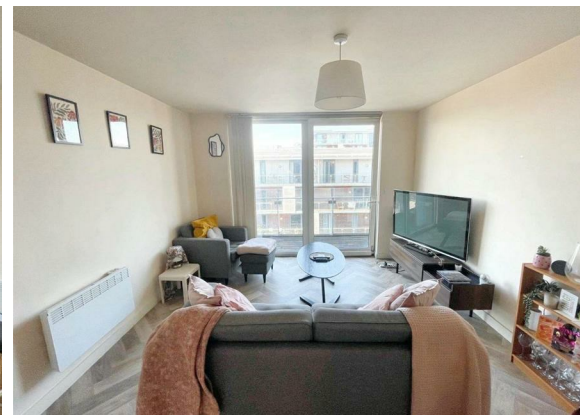
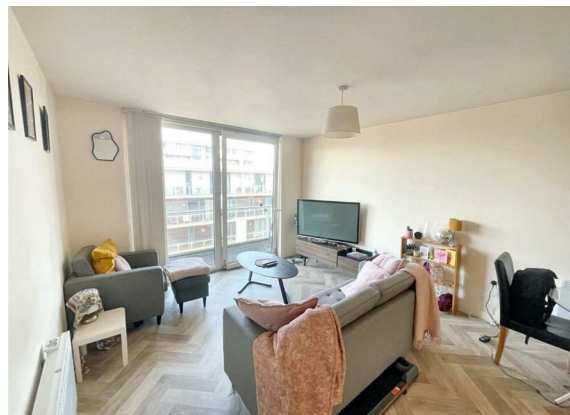
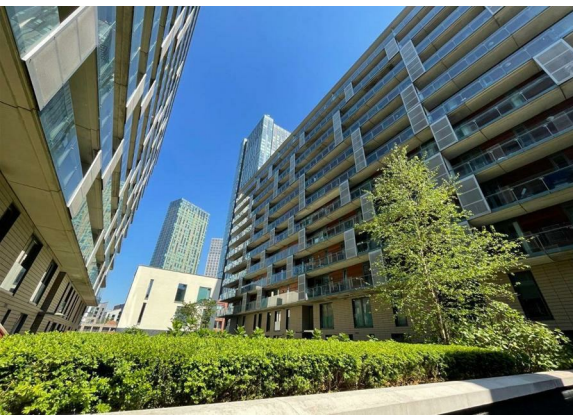


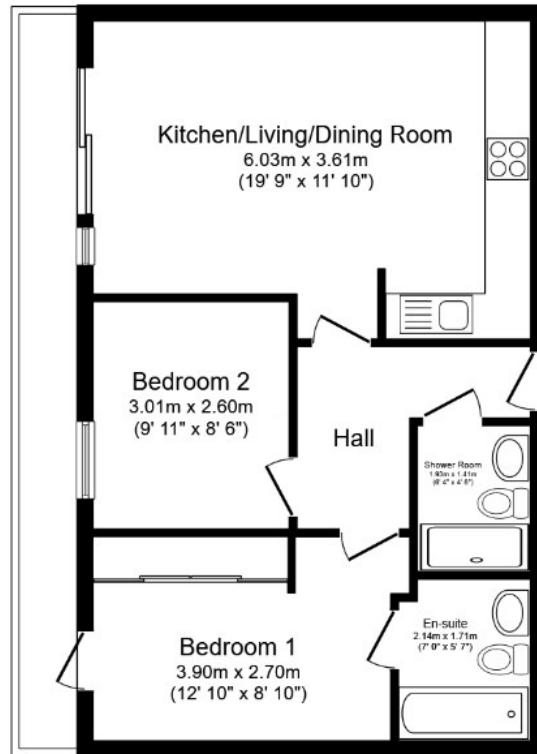


2 Bed  
Apartment  
located  
in Blackfriars Road

£1,225 PCM



 **NPP**  
RESIDENTIAL



**Floor plan**  
 Floor area 55.3 sq.m. (595 sq.ft.)

Total floor area: 55.3 sq.m. (595 sq.ft.)

This floor plan is for illustrative purposes only. It is not drawn to scale. Any measurements, floor areas (including any total floor area), openings and orientations are approximate. No details are guaranteed, they cannot be relied upon for any purpose and do not form any part of any agreement. No liability is taken for any error, omission or misstatement. A party must rely upon its own inspection(s). Powered by www.Propertybox.io

**DIRECTIONS**

**CONTACT**

22 Lloyd Street  
 Manchester  
 M2 5WA

E: [info@nppresidential.co.uk](mailto:info@nppresidential.co.uk)  
 T: 0161 639 0059  
<https://nppresidential.co.uk/>

**EPC Rating:**  
**Council Tax Band: D**

